



**sunair**  
products

www.sunairusa.com  
www.sunaireurope.com

An ISO 9001-2000 Registered Company



Certificate # 2783

**SALES  
ACTION**

PAGE 1 of 6

DATE: November, 2011

# DENSO DIRECT DRIVE CLUTCH ASSEMBLIES!

## SALES ACTION - SALES ACTION - SALES ACTION



**CA-160 Complete Clutch Assembly**  
**PB-160 Pulley With Bearing**  
**BG-417 Pulley Bearing**  
**CH-105 Limiter Hub**  
**MC-1082 Rubber Bumpers**

6 Groove Clutch Pulley - Plastic  
Total Pulley O.D. 130mm  
Groove O.D. 125mm  
Total Pulley Thickness 40mm  
Groove Thickness 28mm

**Vehicle / Compressor Application:** Audi A6: 6SEU14C, 7SEU17C -  
2.4L - 3.2L **OEM #:** 4F0260805F/H/K



**CA-162 Complete Clutch Assembly**  
**PB-162 Pulley With Bearing**  
**BG-417 Pulley Bearing**  
**CH-104 Shallow Metal Hub**  
**MC-1083 Shallow Rubber Boot**

6 Groove Clutch Pulley - Metal  
Total Pulley O.D. 115mm  
Groove O.D. 110mm  
Total Pulley Thickness 30mm  
Groove Thickness 27mm

**Vehicle / Compressor Application:** Audi / VW / Seat / Skoda: 6SEU12C  
Bora, Golf, Lupo, Polo, Cordoba, Ibiza, Fabia, A2  
**OEM #:** 6Q0820803D/G, 8Z0260805A



**CA-163 Complete Clutch Assembly**  
**PB-163 Pulley With Bearing**  
**BG-632 Pulley Bearing**  
**CH-105 Limiter Hub**  
**MC-1082 Rubber Bumpers**

4 Groove Clutch Pulley - Plastic  
Total Pulley O.D. 100mm  
Groove O.D. 100mm  
Total Pulley Thickness 30mm  
Groove Thickness 22mm

**Vehicle / Compressor Application:** BMW: 7SEU17C - 525, 530,  
535, 730i, 730D **OEM #:** 64526917859



**CA-164 Complete Clutch Assembly**  
**PB-164 Pulley With Bearing**  
**BG-632 Pulley Bearing**  
**CH-105 Limiter Hub**  
**MC-1082 Rubber Bumpers**

6 Groove Clutch Pulley - Plastic  
Total Pulley O.D. 115mm  
Groove O.D. 110mm  
Total Pulley Thickness 36mm  
Groove Thickness 28mm

**Vehicle / Compressor Application:** Mercedes: 7SEU17C - C, E & S  
Class Various Engines **OEM #:** A0002301911

**Call Your Sunair Sales Rep Now To Order!**

Sunair Europe • Phone: +31 (0) 495 531 186 • Fax: +31 (0) 495 542787  
Sales: sales@sunaireurope.com



**sunair**  
products

www.sunairusa.com  
www.sunaireurope.com

An ISO 9001-2000 Registered Company



Certificate # 2783

**SALES  
ACTION**

PAGE 2 of 6

DATE: November, 2011

## DENSO DIRECT DRIVE CLUTCH ASSEMBLIES!



**CA-165 Complete Clutch Assembly**  
**PB-165 Pulley With Bearing**  
**BG-632 Pulley Bearing**  
**CH-105 Limiter Hub**  
**MC-1082 Rubber Bumpers**

6 Groove Clutch Pulley - Plastic  
Total Pulley O.D. 105mm  
Groove O.D. 100mm  
Total Pulley Thickness 36mm  
Groove Thickness 28mm

**Vehicle / Compressor Application:** Mercedes: 7SEU17C - C, E & S  
Class, Vito, Viano - Various Engines  
**OEM #:** A0012301211, A0002309111



**CA-166 Complete Clutch Assembly**  
**PB-166 Pulley With Bearing**  
**BG-417 Pulley Bearing**  
**CH-103 High Metal Hub**  
**MC-1081 High Rubber Boot**

4 Groove Clutch Pulley - Metal  
Total Pulley O.D. 114mm  
Groove O.D. 100mm  
Total Pulley Thickness 41mm  
Groove Thickness 22mm

**Vehicle / Compressor Application:** Audi A4, A6, VW: 6SEU12C,  
7SEU16C - 1.9 TDI  
**OEM #:** 8E0260805M, 8E0260805AB, 4B0260805G/M



**CA-168 Complete Clutch Assembly**  
**PB-168 Pulley With Bearing**  
**BG-417 Pulley Bearing**  
**CH-105 Limiter Hub**  
**MC-1082 Rubber Bumpers**

6 Groove Clutch Pulley - Plastic  
Total Pulley O.D. 105mm  
Groove O.D. 100mm  
Total Pulley Thickness 40mm  
Groove Thickness 28mm

**Vehicle / Compressor Application:** Audi: 6SEU14C - A4, A6, Various  
Engines **OEM #:** 4F0260805E/G/I/M/S, 8E0260805AG/BA



**CA-169 Complete Clutch Assembly**  
**PB-169 Pulley With Bearing**  
**BG-417 Pulley Bearing**  
**CH-105 Limiter Hub**  
**MC-1082 Rubber Bumpers**

6 Groove Clutch Pulley - Plastic  
Total Pulley O.D. 120mm  
Groove O.D. 115mm  
Total Pulley Thickness 40mm  
Groove Thickness 28mm

**Vehicle / Compressor Application:** Audi: 6SEU14C - A6 2.0L - 3.0L  
Engines  
**OEM #:** 4F0260805G/M

**Call Your Sunair Sales Rep Now To Order!**

Sunair Europe • Phone: +31 (0) 495 531 186 • Fax: +31 (0) 495 542787  
Sales: sales@sunaireurope.com



**sunair**  
products  
www.sunairusa.com  
www.sunaireurope.com

An ISO 9001-2000 Registered Company



Certificate # 2783

**SALES  
ACTION**

PAGE 3 of 6

DATE: November, 2011

# DENSO DIRECT DRIVE CLUTCH ASSEMBLIES!



**CA-172 Complete Clutch Assembly**  
**PB-172 Pulley With Bearing**  
**BG-632 Pulley Bearing**  
**CH-108 Limiter Hub - High Thread**  
**MC-1082 Rubber Bumpers**

6 Groove Clutch Pulley - Plastic  
Total Pulley O.D. 125mm  
Groove O.D. 120mm  
Total Pulley Thickness 28.5mm  
Groove Thickness 28.5mm

**Vehicle / Compressor Application: Toyota Avensis: 5SE12C**



**CA-173 Complete Clutch Assembly**  
**PB-173 Pulley With Bearing**  
**BG-632 Pulley Bearing**  
**CH-109 Limiter Hub - Low Thread**  
**MC-1082 Rubber Bumpers**

5 Groove Clutch Pulley - Plastic  
Total Pulley O.D. 105mm  
Groove O.D. 100mm  
Total Pulley Thickness 25mm  
Groove Thickness 25mm

**Vehicle / Compressor Application: Toyota Avensis 2.0L. TD: 5SE12C**



**CA-174 Complete Clutch Assembly**  
**PB-174 Pulley With Bearing**  
**BG-632 Pulley Bearing**  
**CH-107 Limiter Hub**  
**MC-1080 Rubber Bumpers**

6 Groove Clutch Pulley - Plastic  
Total Pulley O.D. 120mm  
Groove O.D. 115mm  
Total Pulley Thickness 29mm  
Groove Thickness 29mm

**Vehicle / Compressor Application: Toyota Yaris 1.0L - 1.3L: 5SE09C**



**CA-175 Complete Clutch Assembly**  
**PB-175 Pulley With Bearing**  
**BG-417 Pulley Bearing**  
**MC-1081 High Rubber Boot**

6 Groove Clutch Pulley - Metal  
Total Pulley O.D. 115mm  
Groove O.D. 110mm  
Total Pulley Thickness 27mm  
Groove Thickness 27mm

**Vehicle / Compressor Application: Opel Corsa: 5SL12C**



**CA-176 Complete Clutch Assembly**  
**PB-176 Pulley With Bearing**  
**BG-632 Pulley Bearing**  
**CH-108 Limiter Hub**  
**MC-1082 Rubber Bumpers**

5 Groove Clutch Pulley - Plastic  
Total Pulley O.D. 115mm  
Groove O.D. 110mm  
Total Pulley Thickness 25mm  
Groove Thickness 25mm

**Vehicle / Compressor Application: Opel Corsa: 5SL12C**

**Call Your Sunair Sales Rep Now To Order!**



**sunair**  
products

www.sunairusa.com  
www.sunaireurope.com

An ISO 9001-2000 Registered Company



Certificate # 2783

**SALES  
ACTION**

PAGE 4 of 6

DATE: November, 2011

# DENSO DIRECT DRIVE CLUTCH ASSEMBLIES!



**CA-177 Complete Clutch Assembly**  
**PB-177 Pulley With Bearing**  
**BG-632 Pulley Bearing**  
**CH-105 Limiter Hub**  
**MC-1082 Rubber Bumpers**

8 Groove Clutch Pulley - Plastic  
Total Pulley O.D. 105mm  
Groove O.D. 100mm  
Total Pulley Thickness 37mm

**Vehicle / Compressor Application:** Mercedes: 7SEU17C -  
ML 280, 320, 420, CDi **OEM #:** A0012308311



**CA-178 Complete Clutch Assembly**  
**PB-178 Pulley With Bearing**  
**BG-417 Pulley Bearing**  
**CH-105 Limiter Hub**  
**MC-1082 Rubber Bumpers**

7 Groove Clutch Pulley - Plastic  
Total Pulley O.D. 125mm  
Groove O.D. 120mm  
Total Pulley Thickness 46mm  
Groove Thickness 31.5mm

**Vehicle / Compressor Application:** Mercedes: 7SEU17C -  
C180, 200 **OEM #:** A0012304511, A0002309711



**CA-179 Complete Clutch Assembly**  
**PB-179 Pulley With Bearing**  
**BG-417 Pulley Bearing**  
**CH-103 High Metal Hub**  
**MC-1081 High Rubber Boot**

6 Groove Clutch Pulley - Metal  
Total Pulley O.D. 116mm  
Groove O.D. 111mm  
Total Pulley Thickness 30mm  
Groove Thickness 30mm

**Vehicle / Compressor Application:** Mercedes: 7SEU16C,  
7SEU17C - C, E, S Class, Vito, Sprinter Vans  
**OEM #:** A002306511, A002309011



**CA-180 Complete Clutch Assembly**  
**PB-180 Pulley With Bearing**  
**BG-632 Pulley Bearing**  
**CH-105 Limiter Hub**  
**MC-1082 Rubber Bumpers**

4 Groove Clutch Pulley - Plastic  
Total Pulley O.D. 110mm  
Groove O.D. 110mm  
Total Pulley Thickness 30mm  
Groove Thickness 21.2mm

**Vehicle / Compressor Application:** BMW: 7SEU17C - BMW  
3, 5, 7 Series - Various Engines  
**OEM #:** 64526925721

**Call Your Sunair Sales Rep Now To Order!**

Sunair Europe • Phone: +31 (0) 495 531 186 • Fax: +31 (0) 495 542787  
Sales: sales@sunaireurope.com



**sunair**  
products

www.sunairusa.com  
www.sunaireurope.com

An ISO 9001-2000 Registered Company



Certificate # 2783

**SALES  
ACTION**

PAGE 5 of 6

DATE: November, 2011

## DENSO DIRECT DRIVE CLUTCH ASSEMBLIES!



**CA-184 Complete Clutch Assembly**  
**PB-184 Pulley With Bearing**  
**BG-632 Pulley Bearing**  
**CH-105 Limiter Hub**  
**MC-1082 Rubber Bumpers**

7 Groove Clutch Pulley - Plastic  
Total Pulley O.D. 105mm  
Groove O.D. 100mm  
Total Pulley Thickness 35.5mm  
Groove Thickness 31.5mm

**Vehicle / Compressor Application:** Mercedes: 7SEU17C -  
E-Class E320 CDI / 4-Matic (320CDI), E-CLASS E400 CDI  
**OEM #:** A0012301311, A0012307911



**CA-185 Complete Clutch Assembly**  
**PB-185 Pulley With Bearing**  
**BG-417 Pulley Bearing**  
**CH-105 Limiter Hub**  
**MC-1082 Rubber Bumpers**

6 Groove Clutch Pulley - Plastic  
Total Pulley O.D. 115mm  
Groove O.D. 110mm  
Total Pulley Thickness 40mm  
Groove Thickness 28.5mm

**Vehicle / Compressor Application:** VW-AG: 6EU14C,  
7SEU17C, Audi A4 - 2.4, 3.0L 6SEU14C **OEM #:** 8EO260805AS  
Audi A3 - 1.6, 2.0FSI, 1.9, 2.0TDI, Quattro 3.2 **OEM #:**  
1K0820803E, 1K0820803F, 1K0820895M, 2E0820803C

## NEW DENSO DIRECT DRIVE CLUTCH PARTS!



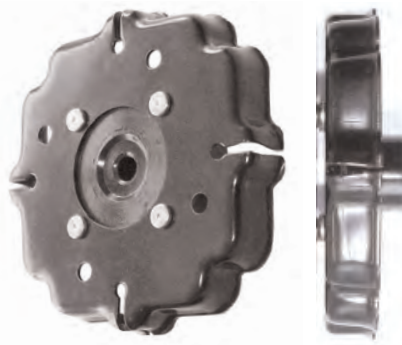
**CH-103**

High Metal Hub for  
CA-166, CA-179, etc.



**CH-104**

Shallow Metal Hub for  
CA-162 Only



**CH-105**

Direct Drive Clutch  
Limiter Hub For Plastic  
Pulleys Only



**Call Your Sunair Sales Rep Now To Order!**

Sunair Europe • Phone: +31 (0) 495 531 186 • Fax: +31 (0) 495 542787  
Sales: sales@sunaireurope.com



**sunair**  
products

www.sunairusa.com  
www.sunaireurope.com

An ISO 9001-2000 Registered Company



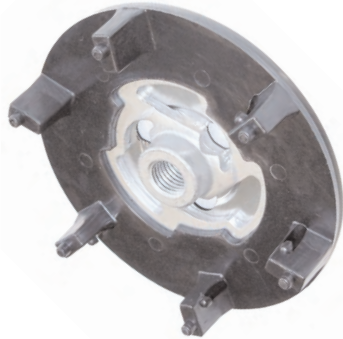
Certificate # 2783

**SALES  
ACTION**

PAGE 6 of 6

DATE: November, 2011

# NEW DENSO DIRECT DRIVE CLUTCH PARTS!



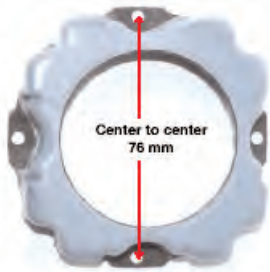
**CH-107**  
Direct Drive Clutch  
Limiter Hub For CA-174



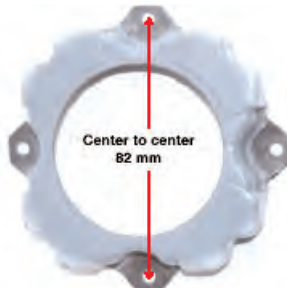
**CH-108**  
Direct Drive Clutch High  
Thread Post Limiter Hub  
For CA-172 & CA-176



**CH-109**  
Direct Drive Clutch Low  
Thread Post Limiter Hub  
For CA-173



**MC-1081**  
High 18mm  
Rubber Boot



**MC-1083**  
Shallow 14.5mm  
Rubber Boot

**NOTE:**  
Boots come  
with rivets

**NOTE:**  
Rubber  
Boots &  
Bumpers are  
**NOT INTER-  
CHANGE-  
ABLE!**



**MC-1080**  
Rubber Bumpers  
For CA-174 Only



**MC-1082**  
Rubber Bumpers  
For Plastic  
Pulleys Only



**TL6129**  
7SEU Denso  
Clutch Hub  
Installer / Remover  
Tool



**TL6130**  
5SER09C Denso  
Clutch Hub  
Installer / Remover  
Tool

**Call Your Sunair Sales Rep Now To Order!**

Sunair Europe • Phone: +31 (0) 495 531 186 • Fax: +31 (0) 495 542787  
Sales: sales@sunaireurope.com